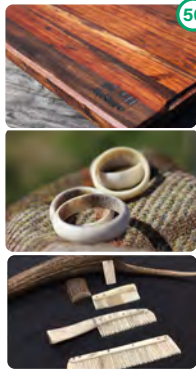


BÙTH ReStore

COTHROM LEARNING CENTRE on South Uist supports community learning and sustainability through its vibrant Restore charity shop and creative skills programmes. Restore offers quality refurbished goods and handcrafted items made by Learners and Volunteers. Our Antler Crafting classes celebrate island heritage, teaching participants to create unique pieces inspired by locally excavated artefacts. Weekly sessions welcome all—come craft your own Hebridean keepsake. Tel: 01878700910 <https://www.cothrom.org.uk/> Facebook and Instagram – Cothrom ReStore



BENBECULA in Gaelic is Beinn na Faoghla meaning 'Mountain of the Ford', an apt name for the island and its solitary hill Rueval, (Ruabhal) also known as the Hill of Miracles — a stepping stone between North and South Uist. Connecting the islands is a series of once treacherous causeways, that meant crossing to the Uists would have involved fording the dangerous stretches of tidal sands. **BALIVANICH** accessed by a coastal road detour, is situated to the northwest of the island where you will find an airport, hospital, fuel station, swimming pool, museum, supermarket, Maclean's Bakery & Butchers, Stepping Stones Restaurant and a riding school.



MUSEUM NAN EILEAN (LIONACLEIT): Discover the history and culture of the Outer Hebrides. Always something new to see! Enjoy engaging temporary displays including island heritage and national touring exhibitions. Located within the Sgoil Lionacleit Community School. **Museum Open:** Tuesday & Thursday 10am-1pm, 2pm-4pm | Wednesday 10am-1pm | Friday 10am-1pm, 2pm-5pm | Saturday 10am-3.30pm | **Closed:** Sunday & Monday | Tel: 01870 603692. More info: www.outerhebridesheritage.org.uk



HEBRIDEAN STAY GUEST HOUSE: self-catering B&B, 3 bed, en-suite accommodation, centrally located in Benbecula. We also offer one night stays for those taking part on the Hebridean Way. hebrideanstay@outlook.com T: 07920 573 137 1a Liniclate, HS7 5PJ



BENBECULA AIRPORT has a long military history: an airfield was built here during WWII, which then became the control centre for the Hebrides rocket range during the Cold War. An Army base established in 1958 is the headquarters for those who service the South Uist missile range, which lies on the northwest part of South Uist together with its local radar tracking station. **RAF Benbecula** serves as the range headquarters and provides additional support facilities; the final part of the range is the radar tracking station on **St Kilda**. The Hebridean range is described as the largest air and sea range in Europe.



GRIMSAY, GRIMOMASAIGH is a tidal island connected to North Uist and Benbecula that measures four miles long and two miles wide. A beautiful landscape, history, archaeology, seafaring, crafts, fresh seafood and a warm welcome awaits you.

THE KILDONAN MUSEUM lies on the main north, south road in South Uist. A museum, with arts and a cafe. Car parking and facilities available. A good place to visit for information about South Uist, its culture, environment and history. **Open:** April - October, 7 days a week, 10am - 5pm. Tel: 01878 710343 kildonanmuseum.co.uk HS8 5RZ



In the far south is the **ISLE OF ERISKAY** with its famous ponies. The ponies are semi wild and often seen in the vicinity of the village. Eriskay is also home to famous wreck the S.S. Politician. The wreck has been the inspiration for the Compton Mackenzie book and film, Whisky Galore. The SS Politician was an 8000-tonne cargo ship which left Liverpool on the 3rd February 1941 laden with amongst other things 260,000 bottles of whisky, bound for Kingston in Jamaica and New Orleans. She went aground off the coast of Eriskay.



WALKING ON BARRA AND VATERSAY If you ascend Heaval which is the highest hill you can see the surrounding Islands and on a clear day you can see the Isles to the south and as far as the Isle of Mull. **The Vatersay walk** is a circular walk of about 4 miles and takes approximately 3 hours. The walk begins in the small car park across the road from the Annie Jane monument. It takes in the sight of Bagh Siar (West Bay), Bagh a Deas (South Bay), Eroisdale and Vatersay Bay. Throughout the spring and summer the Machair is in full bloom and runs along the entire west coast of Barra and Vatersay.



KISIMUL CASTLE sits on a rocky island just off Castlebay and was built around 1039. Since that time, Kisimul has been the stronghold of Clan MacNeil. It is completely surrounded by water and has never fallen to an enemy. Kisimul was abandoned in 1838 when the island was sold, and the castle's condition deteriorated. The castle remains, were purchased by the chief of Clan MacNeil in 1937, who in 2001 leased Kisimul Castle to Historic Scotland for 1000 years for the annual sum of £1 and a bottle of whisky. The boat trip from Castlebay jetty to the castle takes 5 minutes.

