

# South Harris



**BORRISDALE TWEED** offers exclusive homewares & accessories made from our independently woven **HARRIS TWEED®**. All products are made by us or in collaboration with small scale manufacturing partners within the UK. Centrally located in Leverburgh.

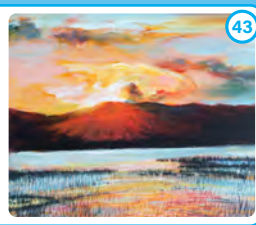
**Usually Open** Monday-Friday from 12 noon - 6pm  
Please call or email if travelling far. 01859 520788  
info@borrisdale.co.uk



**HARRIS TWEED AND KNITWEAR**  
Situated 5 miles from Tarbert on The Golden Rd this purpose built 'Clo Mor' exhibition is a self guided tour showing you Harris Tweed through the ages with hands on sections for all to enjoy and video footage of the weaving process. It has a unique display of old and new pictures, artifacts and present day designer products. Coach parties welcome. Toilet facilities. Tel 01859 511189 info@harristweedandknitwear.co.uk  
**Open:** April - October, Mon - Sat 9am-5.30pm  
www.harristweedandknitwear.co.uk



**HOLMASAIG STUDIO GALLERY:**  
Quidinish S.E Harris resident artist Margarita Williams DA (Glas) awarded the C.R.Macintosh Assoc/France Collioure Residency, works in watercolour, mixed media, Japanese woodblock printing, reflecting the Hebridean environment and wild flowers of her homeland. St Kilda also inspires her varied work. **Open: Mon-Sat 11-5**  
Tel. 01859530401 holmasaigallery.com



**FLODABAY FARM LUXURY CHALET AND B&B:**  
**Chalet:** situated in an elevated position in the crofting settlement of Flodabay, in an area known as the Bays of Harris. Accommodates a maximum of two.  
**B&B:** A family-run, adults only B&B nestled in the stunning and tranquil surroundings of the Isle of Harris.  
www.flodabayfarm.co.uk  
Tel: 07767751847  
Flodabay Farm, Isle of Harris, HS3 3HA



## Isle of Benbecula - see map on Page 8



**THE STEPPING STONE RESTAURANT:**  
Serving snacks and hot meals throughout the day, using fresh local produce where possible. Open all year round, showcasing the best in local produce since 1997. Reservations are recommended.  
**Opening Hours:** Wed to Sat 11am - 8pm  
Sunday 12 - 6pm. Closed Mon & Tues  
Tel: 01870 603377



**MACLEANS BAKERY & BUTCHERS:**  
Run by the MacLean family since 1987, we are a small independent bakery based in Uachdar, Benbecula, just off the main A865. Our delicious breads, rolls, pastries, savouries, oatcakes & biscuits are freshly made every day using traditional methods.  
**Shop open:** Mon: 9.30am-1pm, Tues-Fri: 9.30am-5.30pm & Sat: 9.30am-1pm. Tel: 01870 602659.  
Email: enquiries@macleansbakery.co.uk



**MUSEUM NAN EILEAN (LIONACLEIT):**  
Discover the history and culture of the Outer Hebrides. Always something new to see! Enjoy engaging temporary displays including island heritage and national touring exhibitions. Located within the Sgoil Lionacleit Community School.  
**Museum Open:** Tuesday & Thursday 10am-1pm, 2pm-4pm | Wednesday 10am-1pm | Friday 10am-1pm, 2pm-5pm | Saturday 10am-3.30pm | Closed: Sunday & Monday |  
Tel: 01870 603692.  
More info: www.outerhebridesheritage.org.uk

