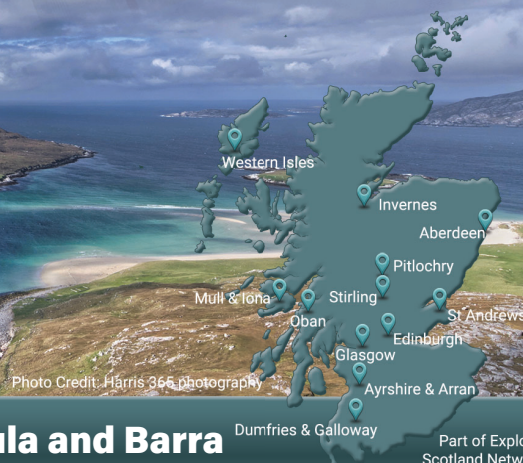


explore

Outer Hebrides



The Western Isles of Lewis, Harris, Uist, Benbecula and Barra



Leaving from Miavaig Harbour, Uig, Isle of Lewis.

Tel: 01851 672469.
Book Online: www.seatrek.co.uk
Email: bookings@seatrek.co.uk



SEATREK is based in Uig on Lewis, one of the most beautiful locations in Britain. We offer unforgettable boat trips around the Hebrides. Try any of our trips for a great family experience with the opportunity of seeing seals, dolphins and many species of birds.

SEATREK RIB SHORT TRIPS

Sea Eagles & Lagoon Trip	2 hours
Island Excursion	3 hours
Fishing Trip	2 hours
Gallan Head Trip	2 hours
Sea Stacks Trip	2 hours

SEATREK MOTOR CRUISER TRIP

Wildlife of Loch Roag	3 hours
-----------------------	---------

UIG SANDS RESTAURANT is a licensed restaurant with spectacular views across the beach. Open for evening meals. Booking essential. Call: 01851 672 334

UIG ROOMS enjoy the same spectacular views and are **Open year round** with no minimum night stay. Each room has ensuite and kitchen facilities. www.uigsands.co.uk
Email: elly@uigsands.co.uk
Timsgrary, Isle of Lewis HS2 9ET



DOUNE BRAES HOTEL Restaurant with Gallery & Gift Shop. We especially cater for 'The Hebridean Way' for cyclists, walkers and motorcyclists, with safe overnight storage for bicycles. Comfortable accommodation, light meals served through the day and full evening menu in the evening. Locally sourced produce including our own beef raised on our croft, shellfish and local lamb. We offer a good selection of Malt Whiskies in the Lounge Bar or coffees to go whilst you explore the West Side of the Island.
Email: hebrides@doune-braes.co.uk www.doune-braes.co.uk



SEA LEWIS BOAT TRIPS: Explore the coastline North and South of Stornoway in our 8.5m Rib. Comfortably seating 8 passengers, we can provide sightseeing and sea-fishing trips, take a trip to the Shiant Isles and its

abundance of wildlife including puffins, sea eagles and occasional sightings of dolphins and porpoises. Leaving by prior arrangement from Stornoway area. Contact Charles or Joe on 01851 702303/07900 605405.
www.sealewis.co.uk Email: sealewis850@gmail.com (Stornoway Map Grid: B3)

BLUE PIG CREATIVE SPACE:

Carlway's unique working studio and gallery of Jane and Peter Harlington. Collage, printmaking and mixed media originals. Bespoke workshops by appointment. Blue Bothy accommodation. Visit our new branch in Stornoway: Blue Pig in Town (7b) (Map Grid B4) Email: bluepigstudio@googlemail.com
Tel: 01851 643225. Visit us on Facebook!



STORNOWAY SEAFARI: The Western Isles boast some of the most dramatic coastlines in Scotland. A professional sea tour operator offering wildlife/coastal tours from 1st May - 30th Oct. Trips from 1.5 hour coastal tours to 4 hour shiant isles trips. Our vessels - "Our Lilly" and "Azula" are fully MCA coded. Freephone: 0800 246 5609. Book online: www.stornowayseafari.com
Email: stornowayseafari@gmail.com (Stornoway Map Grid: B3)

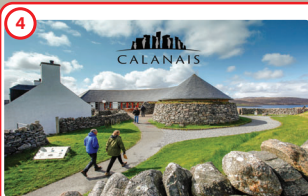


THE BEACH HOUSE GALLERY:

A beautiful little gallery situated next to the beach at Dalbeg (HS2 9AE) on the west coast of the Isle of Lewis. Paintings, prints and pretty things, all handmade by Lesley & Alisdair Wiseman.

Open most afternoons but phone if you want to make sure we're in or if you want to visit at a different time.
Tel: 07500 117832

www.thebeachhousegallery.co.uk



CALANAIS VISITOR CENTRE is the gateway to the world famous Calanais Standing Stones. Visit our interpretative display, enjoy home cooked food and spectacular views in our café, and find a unique gift in our shop.

Open: 6 days a week from Easter to end Sept. For winter opening times, to discover more and plan your visit,

go to our website www.calanais.org or find us on Facebook and Instagram
CALANAIS STANDING STONES is one of the most significant megalithic complexes in Europe. The most impressive set of stones is Calanais 1 with Calanais 2 and 3 nearby.

CARLOWAY BROCH is an iron age structure located above Loch an Duin. It is one of the best preserved Brochs in the Hebrides dating back over 2000 years. For more information on both, please visit: www.historicenvironment.scot



GERRANNAN BLACKHOUSE VILLAGE

Sited in an environment of outstanding natural beauty at Carlway on the Atlantic coast of the Isle of Lewis, this unique group of restored thatched cottages should be included in the itinerary of all visitors to the island. Step back in time, learn about and experience the way of life in a typical crofting township of the last century. See traditional activities, including the weaving of the famous Harris Tweed, buy some mementoes of your visit in the village shop and relax in the cafeteria where you can enjoy the best of homemade fare.



Open: Monday - Saturday 9.30am to 5.30pm throughout the summer season, but feel free to visit at any time. Admission charges and further information: Tel: 01851 643416.
Email: info@gerrannan.com
Web: www.gerrannan.com



Places to Visit



Shops and Services



Sport and Recreation



Eating Out

Stornoway - see map on page 3

THE ISLAND SPIRIT WHISKY SHOP:

A small, independent, family-run business located in the heart of Stornoway town centre. We offer a wide range of Scotch Whisky, Gin, Rum & other fine Spirits, Local Craft Ales, Local products & Gifts. Facebook/Instagram: @Islandspiritwhisky Twitter: @Island_whisky Mobile: 07555 697540 Shop: 01851 705705 38 Cromwell St. HS1 2DD



10

STORE67:

CYCLING-CAMPING-YOGA-BEACH-ECO LIVING

Stornoway's go-to outdoor lifestyle store - specialising in bikes, scooters and skateboards, camping and hiking gear, paddleboarding, and other watersports equipment, as well as yoga and eco-living products. Website: www.store-67.com Email: store67enquiries@gmail.com Facebook/Instagram: @store67_sy Kenneth Street, HS1 2DS

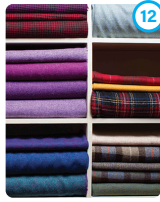


11

HARRIS TWEED HEBRIDES is an award-winning cloth manufacturer based in Shawbost on the west coast of the Isle of Lewis. Our shop in Stornoway stocks a wide range of Harris Tweed by the metre, garments and accessories.

OPEN throughout the year from Monday to Saturday, 10am - 5.30pm. Visit us to see the finest Harris Tweed products and to find out more about our beautiful cloth!

Tel: 01851 70004625 Email: retail@harristweedhebrides.com North Beach, Stornoway, Isle of Lewis, HS1 2XQ. (Map Grid: B4)



12

HEBRIDEAN JEWELLERY SHOP at 63 Cromwell St. Stornoway selling a wide variety of jewellery, giftware and books of quality and good value for money. This quality hand crafted jewellery is manufactured on South Uist in the Outer Hebrides.

If you are unable to visit our shop, please visit us on our online store. www.hebrideanjewellery.co.uk Tel: 01851 702372.

HS1 2DD (Map Grid: B3)



13

RILEYS is a family run toy shop named after our son. Soon after opening in 2022 we won the Autism friendly business award.

We have a wide range of competitively priced toys to include sensory toys and a sensory board for children to play on. We strive to create an all inclusive space that all children can enjoy.

Email: thoraighbankcrofting@aol.com

Tel: 07794 106041



14

TECH MOBILE: Laptops, PC's, tablets, games consoles, games, sims, chargers, phone repairs, top-ups, accessories and much more. www.tech-mobile.co.uk

Email: louis@tech-mobile.co.uk Tel: 01851 700178



15

SALK HEBRIDEAN SEA GLASS JEWELLERY

Jewellery made from Sea Glass found on our wild and windy beaches and shores of the Outer Hebrides.

www.salkjewellery.com www.salkgiftshop.com



16

THE STORNOWAY SMOKEHOUSE is the oldest in all the islands and has one of the last brick kilns remaining anywhere. Seasoned by decades of use, we cure in it our flagship product, **Stornoway Double Smoked Salmon**, which we export widely. In our shop, we also sell our **Famous Stornoway Kippers** and a wide range of other smoked delicacies. We look forward to welcoming you to the Smokehouse in the coming season. Tel: 01851 702723 Email: info@stornowaysmokehouse.co.uk www.stornowaysmokehouse.co.uk (Map Grid: C4)



17

ENGEBRET LTD FILLING STATION

Open 7 days: Monday to Saturday 6am to 11pm, Sunday 10am to 4pm. Licensed convenience store, Calor gas, hot and cold food, ATM. Also selling outdoor equipment and footwear, maps and GPS, sea and freshwater fishing equipment. Firearms dealership. Tel: 01851 702303 Email: engebretltd@gmail.com

www.engebret.co.uk (Map Grid: D4)



18

MUSEUM & TASGLANN NAN EILEAN: Discover the history and culture of the Outer Hebrides. Learn about our distinctive lives shaped by the land and the sea. Enjoy a wealth of engaging displays including six of the famed Lewis Chessmen. Find out about island life from the earliest human occupation to the present. Research the history of the Outer Hebrides through the archive collections. **Museum Open** Tue - Sat: Apr - Sep, 10am - 5pm & Oct - Mar: 1pm - 4pm. **Closed** Sundays and Mondays.

Archive Open: by appointment. Tel: 01851 822746. (Map Grid: A3) Email: museum@cne-siar.gov.uk or archives@cne-siar.gov.uk



19

ARTIZAN: A gallery gift house, coffee shop and bar in the heart of Stornoway on the Isle of Lewis. Serves breakfast and lunch menu including cakes, sandwiches, light bites, small batch freshly-brewed coffee and other hot and cold beverages.

Open: Mon-Fri 9.30am-5pm, Sat 9.30am -11.30pm, Closed Sunday

www.artizanjewels.co.uk

12- 14 Church Street, Stornoway (Map Grid: B3)



20

HOME IMPROVEMENT CENTRE is a family-owned shop located 200m from the ferry terminal and 400m from Stornoway bus station stocking power tools, hand tools, timber, fireparts, plumbing and electrical, hardware, paint, gardening, homeware and gifts, cookshop and bathroom accessories.

Phone: 01851 703646 20 Bells Road HS1 2RA

@homecentre_stornoway (Insta) @HIC.Stornoway (FB)

Open: Mon - Fri 8am - 5.30pm Saturday 9am - 5pm

Closed Sunday



21

STAR INN: Stornoway's oldest pub dating back to the 1700's serving beers, cocktails, wines, spirits, local gins, Scottish malt whiskies, barista coffee & local baking. **Open:** Mon to Wed 11am - 11pm Thurs to Sat 11am - 1am Sunday 12.30pm - 11pm



22

SANDWICK BAY CANDLES & LIVING: Visit our lifestyle shop for locally poured candles, coffee to go, cards, gifts and more. Phone: 01851 705009

www.sandwickbaycandles.com



23

Isle of Lewis - see map on Page 5

ST. COLUMBA'S UI CHURCH (*Eaglais na h-Aoidhe*) was built in the 14th century on the site of a cell first occupied by St Catan, a contemporary of St Columba, in the 6th century. Situated within its own graveyard, overlooking Broad Bay, the church is the burial place of the Macleod Chiefs of Lewis and contains two carved grave slabs commemorating Roderick Macleod VII (d.1498) and his daughter Margaret Mackinnon (d.1503). It is only a 10 minute drive from Stornoway and on a bus route. www.uichurch.co.uk.



24

BARVAS TO CARLOWAY: collect treats from **Hebridean Bakehouse** then take in the sights of the **Whale Bone Arch** in Bragar, **Arnol Blackhouse**, **Norse Mill & Kiln** in Shawbost, **The Beach House Gallery** in Dalbeg, **Dalmore beach**, **Dancing Flower Crafts**, then to **Leathad Ard Gardens** (25a) a hidden oasis of colour showing what can be achieved in an exposed location. Open to the public with donations going to charity. Continue onto **Blue Pig Gallery**, **Garnin Gallery** & **Gearranan Blackhouse Village**.



25

THE BLACKHOUSE, ARNOL Gain a unique insight into island life by visiting a traditional, fully furnished, thatched house built in the 1880's, with an attached barn, byre and stackyard which sheltered the family and their animals under the same roof. Gaelic-speaking members of staff are usually on hand to answer queries about the crofting life on the Isle of Lewis

Tel: 01851 710395

historicenvironment.scot/blackhouse-arnol



26

DANCING FLOWER CRAFT SHOP is in the delightful village of Carloway, where we handmake beautiful Harris Tweed arts and crafts inspired by the Outer Hebrides. Our wee blue shop is full of unique, colourful, hand-embroidered, and one-off bespoke arts and crafts, as well as paintings, prints and cards by other local artists.

Open 10am - 5pm throughout the Summer, 11am - 3pm in Winter, and appointments possible outside these times.

Email: info@dancingflowercrafts.co.uk Call: 07985289468



27

GARENIN GALLERY: Located next-door to the stunning Gearranan Blackhouse Village (9) on the west coast of the island, we are an art gallery and gift shop that specialises in Scottish artists and makers. We sell a wide variety of art and gifts (both originals and prints) by a mix of well-known Scottish artists and talented islanders alike, as well as photography by Joseph Kirkman ARPS. Website: www.garenin-gallery.co.uk

Email: garenin-gallery@gmail.com

Instagram: @garenin_gallery



28

CARLOWAY COMMUNITY CENTRE AND SHOP:

The refurbished Centre with a new Community Shop, laundrette and toilets open to the public, and a community hall and kitchen available for hire. Pop in while you're on your tour of the West Side for a warm welcome.

Bidh fàilte bhlàth romhaibh!

www.facebook.com/carlowaycommunity



29

Stornoway

War Memorial



STORNOWAY is the main town on the Isle of Lewis and was founded by Vikings in the 9th Century.

This settlement grew around a sheltered harbour and over the years became a hub for people from all over the island.

Following the trade wars in the early 1600's, Lewis was transferred to the MacKenzies of Seaforth. In 1844, the MacKenzies sold Stornoway and The Isle of Lewis to Sir James Matheson, who built Lews Castle.

In 1918, Matheson sold the island to William Lever, 1st Viscount Leverhulme. However, his economic plans overstretched his finances so Stornoway was given to the people of the town.

Today, Stornoway is a vibrant town with independent retailers, coffee shops, restaurants, bars, an art centre, fishmongers, butchers, delis and much more.

Golf Course

Hospital

A857

A859

HERRING GIRLS

For almost 100 years from around 1850 until World War II, 3000 island women were employed as Herring Girls. The girls worked locally then followed the fish through the summer season. Stornoway was recognised as the principal herring port in Great Britain, if not Europe & was shaped by the vast wealth that the herring industry offered. In summer the harbour would have up to 1000 fishing boats docked.

MACLEOD & MACLEOD
STORNOWAY BLACK PUDDING

34 BARONY SQUARE
3 BEDROOM
SELF-CATERING HOUSE
01851 703612
CALUM.WATTS@BTINTERNET.COM

HEBRIDEAN FLUTTERBY
HARRIS TWEED, FRAGRANCE, GIFTS

SALKA
SEA GLASS JEWELLERY

MUSEUM & TASGLANN NAN EILEEN
DISCOVER THE HISTORY & CULTURE OF THE OUTER HEBRIDES

RILEYS
A FAMILY RUN TOY SHOP

TECH MOBILE
COMPUTER & MOBILE PHONE SERVICES

STORE 67
OUTDOOR LIFESTYLE SHOP

ENGBRETS
FUEL & TAKEAWAY FOOD

SEA LEWIS
BOAT TRIPS

STORNOWAY SEAFARI
WILDLIFE & COASTAL TOURS

HEBRIDEAN JEWELLERY
JEWELLERY, GIFTWARE & BOOKS

ISLAND SPIRIT WHISKY SHOP

HEBRIDEAN TEA STORE
TEA & COFFEE MERCHANT

THE STAR INN
STORNOWAY'S OLDEST PUB

BLUE PIG IN TOWN
WORKING STUDIO & GALLERY

HARRIS TWEED HEBRIDES

THE FANK CAFÉ BAR
CRAFT BEER, COCKTAILS, WINE

SANDWICH BAY
HAND-POURED CANDLES

THE STORNOWAY SMOKEHOUSE

THE HOME IMPROVEMENT CENTRE

STORNOWAY CAR HIRE
01851 702658 / 07522434215

Isle of Lewis (continued) - see map on Page 5

BARVAS TO NESS: (A857) independent retailers, restaurants, cafés, a museum, grocery shops, laundrette, charity shop, galleries and more. **HISTORICAL SITES:** **Clach an Trushal "Stone of Compassion"** the remaining stone from a circle and not the site of a great battle is said to 19ft to be the tallest standing stone in Scotland. **Steinacleit Stone Circle** lay hidden until the 1920's when crofters digging peat uncovered the circle; thought to be Neolithic, but may be prehistoric. **Dùn Èistean**, an archaeological site in Nis (Ness) is the stronghold of Clan Morrison, once a powerful family within the Lordship of the Isles. The 12th century church of **St Moluag** and **The Butt of Lewis Lighthouse** designed by David Stevenson. **(A)**

SEA IN DESIGN: is located 20 minutes from Stornoway on the way to The Butt of Lewis. Selling antique and vintage maritime and nautical pieces alongside curiosities, Hebridean artifacts, salvage, militaria, books, works of art, the unusual and whatever else comes our way that we find interesting. www.seaindesign.com
Open year round Tues - Sat or by appointment
Phone 01851 850242/07484105892
Email: sidney.tunstall@btinternet.com



COMUNN EACHDRAIDH NIS is a visitor centre situated in North Dell on the main A857. It houses an accredited museum, local history archive and genealogical records for the North Lewis area. The newly refurbished centre also offers a cafe and gift shop supporting local producers. Exhibitions vary throughout the year.
Open: Mon - Fri 10am-4.30pm throughout the tourist season.
Tel: 01851 810377
www.nesshistorical.co.uk



HARBOUR VIEW GALLERY: Original paintings, prints and cards by Anthony J Barber, capturing the moods and colours of the Islands. Work can be viewed at Harbour View studio gallery in Port of Ness on the Isle of Lewis. The artist exhibits throughout the UK, including RSA and RSW (Edinburgh) and RSMA (London) with work also in private collections in the UK, Europe, USA & Australia.
Email: info@abarber.co.uk
Tel: 01851 810735. www.abarber.co.uk



THE BREAKWATER: Licensed cafe with panoramic sea views across Port harbour & beach. Coffees, teas, cold drinks and milkshakes. Pizzas, toasties, paninis, burgers, fish & chips, curries and much more. Gift shop and toilets.
Open Tues & Wed 12pm to 6pm, Thurs - Sat 12pm to 9pm. Daytime and Evening Menu available.
See Facebook for more info @thebreakwater.ness
Call (01851) 811001.
Email: thebreakwater.ness@gmail.com



SPÖRSNIS is a modern and well-equipped leisure centre, owned and run by the community in Ness. A 10-pin bowling alley compliments the gyms, sauna and multi-purpose hall and visitors are able to make use of the facilities including the showers and chemical waste disposal.
Open Monday - Saturday 9am - 8pm
www.sporsnis.co.uk
info@sporsnis.co.uk



ALBANNACH GUIDED TOURS AND TAXI: Executive Taxi service in Lewis & Harris. Your personalised Guided Tours of Lewis to Barra and ALL of Scotland (Walks & Drives) with a fully-qualified & insured Scottish Tourist Guide. Pick-ups from Edinburgh, Glasgow, Stornoway, etc. Your own friendly, informative Guide shows you the sights, wildlife and historical attractions, many of which are off the beaten track! Mobile: 07747 117870.
Email: info@celtic-tours.com www.albannachtours.co.uk



THE KINLOCH HISTORICAL SOCIETY: based at the Kinloch Community Hub, Balallan. It houses an **accredited museum**, local archive & genealogy of the Kinloch area. **FACILITIES:** Café, Gift Shop, Charity shop, Wi-Fi, toilets, laundrette, baby changing facilities, disabled access, onsite parking, electric charging point.
Opening times: see Facebook
Tel: 01851 830778



THE WEAVING SHED:

Find unique tweeds inspired by the landscape, watch weaving demonstrations and find out about the production process. Browse a large selection of handcrafted tweed clothing, bags, accessories and homeware, plus seashore jewellery and original artworks. Tel: 07833 335186.
Email: westernislesdesigns@yahoo.com
www.westernislesdesigns.co.uk
22a Crossbost, Lochs, HS2 9NP



UIG LODGE is a fishing lodge, B&B and award winning salmon smokery based on the beautiful west coast of Lewis. It overlooks the dramatic white sands of Uig Bay.
Visitors welcome all year round.
Open Monday - Saturday 9.00am - 5.00pm.
Tel: 01851 672396.
Visit our online shop: www.uiglodge.co.uk
Email: info@uiglodge.co.uk



ISLEWEAR: Hebridean Designer Jewellery celebrating the unique heritage of rural Scotland. Skillfully created, inspired and shaped by the wild elements of Scotland. 18 Breascleite HS29EF Visit: www.islewear.co.uk for opening hours.



ALPACAN: Alpacas of the Outer Hebrides
Book your private group meeting with our fabulous alpacas on our family croft in Coll, it's fun, friendly and suitable for all!
www.alpaca.co.uk



COLL POTTERY CRAFT CENTRE: A working craft centre featuring ceramics, glass, and jewellery. Our galleries have something for everyone in a wide range of items all made on site. Additionally, we offer classes/tuition in pottery and glass, from beginner to advanced, ideal for a rainy afternoon, or even longer.
Open 7 days www.collpottery.co.uk
Facebook: Coll Pottery Craft Centre
Tel: 07787 030504 / 07876273900



Isle of Harris - see map on Page 5

ARDHASAIG GLASS AND ARTS:
Home of The Hebridean Design Company:
Handmade Glass and Embroidered Art - designed and created here in our Open Studios & inspired by the colours and landscapes around us. Glass workshops held throughout the year - contact us for more details and how to book.



2 miles North of Tarbert and on The Hebridean Way - at Ardhaisaig, Isle of Harris, HS3 3AJ.

OPEN ALL YEAR
Teas, coffees and restroom facilities.
Disabled access and parking.
Tel: 01859 502644
Email: info@thehebrideandesigncompany.com
Website: www.thehebrideandesigncompany.com



HOTEL HEBRIDES: With a high level of design throughout, this 4 star boutique hotel incorporates stylish and contemporary dining in the modern Pierhouse Seafood Restaurant and at its heart a great bar, the Mote lounge, with a fine selection of whisky, great food, live music and a brilliant buzz.
Tel: 01859 502364.
Email: stay@hotel-hebrides.com
www.hotel-hebrides.com



HARRIS TWEED ISLE OF HARRIS Our shop in Tarbert has a large selection of Harris Tweed clothes for ladies, gentlemen and children and a superb range of bags, hats, shoes, purses and other accessories. The Tweed is handwoven in the weavers own home. Opposite the shop is our store with Tweed, yarn and wool for sale. Coach parties welcome. Tel: 01859 502040/502505/502727
Email: info@harristweedisleofharris.co.uk
www.harristweedisleofharris.co.uk



ESSENCE OF HARRIS: Our scented soy wax candles, reed diffusers and bath & body products are all hand poured on the beautiful Isle of Harris using the finest ingredients. Capturing the beauty of our home, the passion of our people and the tranquility of our magical island through Home Fragrance. Find our shop in Tarbert, located in the heart of the village opposite Hotel Hebrides. Visit us online to find out more and to shop now www.essenceofharris.co.uk.
Email: info@essenceofharris.com Tel: 01859 502768.




BLAMIRE AT HARRIS
A wee shop in Tarbert filled with handmade ceramics, original paintings, prints and whisky decanters. All inspired by the colours of the coast.
Take home a memory of these beautiful Islands.
www.blamireatharris.com
Main St, Tarbert, HS3 3DJ



Isles of Harris and Lewis

- 1 Isle of Harris & Lewis Seatrek
- 4 Calanais Stones & Visitor Centre
- 5 Uig Sands Restaurant
- 6 Doune Braes Hotel
- 7 Blue Pig Creative Space
- 8 The Beach House Gallery
- 9 Gearrannan Blackhouse Village
- 24 St. Columba's Uì Church
- 26 The Blackhouse, Arnol
- 27 Dancing Flower Craft Shop
- 28 Garenin Gallery
- 29 Carloway Community Centre & Shop
- 31 Sea in Design
- 32 Commune Eachdraidh Nis (Ness Historical Centre)
- 33 Harbour View Gallery
- 34 The Breakwater
- 35 Sporsnis
- 36 Kinloch Historical Society
- 38 The Weaving Shed
- 39 Uig Lodge
- 40 Islewear
- 41 Alpacan
- 42 Coll Pottery Craft Centre
- 43 Ardhaisaig glass and arts (The Hebridean Design Company)




CARLOWAY BROCH
EXCEPTIONALLY WELL PRESERVED BROCH




ISLEWEAR
HEBRIDEAN DESIGNER JEWELLERY




CRUST
CRUSTLIKETHAT.CO.UK



HARSGEIR VIEW
2 BEDROOM HOLIDAY COTTAGE
01851 703612
CALUM.MAT73@BTINTERNET.COM



CLIFF STUDIO



HEBRIDEAN BAKEHOUSE
CAKE, COOKIES, ICE CREAM, DRINKS.



BLACKHOUSE ARNOL
TRADITIONAL FULLY FURNISHED BLACKHOUSE



THE BEACH HOUSE GALLERY
PAINTINGS, PRINTS & PRETTY THINGS



LEATHAD ARD GARDENS
OPEN FOR CHARITY



WOBBLY DOG OF LEWIS
CAFE, GIFTS, DOG FRIENDLY



THE CRAFTY WEAVER
HARRIS TWEED & KNITTED MAKES HAND-DYED YARNS



ISLAND ARTS
GALLERY & COFFEE SHOP



RAVENSPPOINT
HOSTEL, SHOP, TEAROOM & FUEL



THE WEE CROFT SHOP
HARRIS TWEED & HOME BAKING



LOOMSHED BREWERY
HEBRIDEAN CRAFT LAGER AND ALES



ISLAND DANTIES
SWEET AND SAVORY HOME BAKING

Tarbert Street Map

ISLE OF SCALPAY located to the east of Tarbert is accessed by a bridge built in 1997 linking Scalpay to Harris. A 30 minute walk takes you to Eilean Glas, the oldest lighthouse in The Outer Hebrides. Pick up some treats from **Island Dainties (81)** to enjoy on your walk.



THE ISLE OF HARRIS has a wide range of landscapes. On the west coast lie some of the most spectacular beaches in Great Britain surrounded by stunning open machair. To the east known as Na Baigh (The Bays) the terrain is rugged and mountainous where single track roads wind through large boulders resembling a lunar landscape. To the south lies St Clement's Church (Tur Chliamainn) built in the early 1500's. To the north a winding single track road takes you past Amhuinnsuidhe Castle and Highland cattle to Huinis at the end of the road.



Isle of Lewis & Harris

South Harris map continued on page 6

- Places to Visit
- Shops and Services
- Sport and Recreation
- Eating Out

South Harris



90 LOMSHED DELI
COFFEE, SANDWICHES, SNACKS

89 THE CAKE SHED
HOME BAKING FROM OUR FAMILY CROFT

88 LUSKENTYRE BEACH HUT
GIFTS, DRINKS, ICES, SNACKS

87 JOCELINE HILDREY ILLUSTRATION
WORKS OF ART AND GIFTS

86 MUSTHEB
ARTISAN MUSTARD

85 THE BOTHY
PUB, FOOD, RELAX
WWW.THEBOTHYHARRIS.COM

84 CAFÉ 34
HOME BAKING, SOUP & HOT DRINKS
OPEN THURSDAYS

83 FINSBAY GALLERY

82 SKOON ART GALLERY

HARRIS 365 www.harris365.com
Photographs of everything Harris!
Email: isleofharris365@gmail.com Call: 07917002313
f @isleofharris365

BORRISDALE TWEED offers exclusive homewares & accessories made from our independently woven **HARRIS TWEED®**. All products are made by us or in collaboration with small scale manufacturing partners within the UK. Centrally located in Leverburgh.

Usually Open Monday-Friday from 12 noon - 6pm
Please call or email if travelling far. 01859 520788
info@borrisdale.co.uk



HARRIS TWEED AND KNITWEAR

Situated 5 miles from Tarbert on The Golden Rd this purpose built 'Clo Mor' exhibition is a self guided tour showing you Harris Tweed through the ages with hands on sections for all to enjoy and video footage of the weaving process. It has a unique display of old and new pictures, artifacts and present day designer products. Coach parties welcome. Toilet facilities. Tel 01859 511189 info@harristweedandknitwear.co.uk

Open: April - October, Mon - Sat 9am-5.30pm
www.harristweedandknitwear.co.uk



SCARISTA HOUSE RESTAURANT Isle of Harris:

Good Hotel Guide César Award winner. Featured in The Good Food Guide, The Michelin Guide, Scotland the Best and Alastair Sawdays's Eat Slow Britain. Elegant, licensed, candle-lit restaurant open for dinner to non-residents every evening serving fresh Island fish, shellfish, lamb, beef and game. Scottish cheeses. Interesting and varied wine list. Booking essential. Tel: 01859 550238. Email: bookings@scaristahouse.com
www.scaristahouse.com



HOLMASAIG STUDIO GALLERY: Quidinish

S.E. Harris. Fine Art by resident artist Margarita Williams DA awarded the CRMacintosh/Assoc/ France residency in Collioure 2014. Watercolour paintings, cards Japanese woodblock prints, mixed media work reflecting the unique landscape, birds and wild flowers. St Kilda also inspires her varied work 200 + originals. **Open:** 11am - 5pm Mon - Sat. Tel: 01859 530401. www.holmasaiggallery.com



SEA HARRIS: Specialise in fast, comfortable day trips from Leverburgh to St. Kilda on our purpose built vessel Enchanted Isle. These dramatic volcanic islands are owned and managed by the National Trust for Scotland and are one of 39 sites in the world listed as a **UNESCO Dual World Heritage Site**. They boast the highest sea cliffs in the UK as well as being the single most important sea bird breeding station in North West Europe - an amazing experience! We also offer shorter boat trips to the many other islands around the coast of Harris on our Rib Pabbay, with our Shiant's trip from Tarbert being a firm favourite with bird and nature lovers and often referred to as a 'mini St. Kilda'.



Book online at
www.seaharris.com

Tel: 01859 502007
Mob: 07760 216555



Isle of Benbecula - see map on Page 8



THE STEPPING STONE RESTAURANT:

Serving snacks and hot meals throughout the day, using fresh local produce where possible. Open all year round, showcasing the best in local produce since 1997. Reservations are recommended.

Opening Hours: Monday to Saturday 11am-8pm & Sunday 12-6pm
Tel: 01870 603377



MACLEANS BAKERY & BUTCHERS:

Run by the MacLean brothers since 1987, we are a small independent bakery based in Uachdar, Benbecula, just off the main A865. Our delicious breads, rolls, pastries, savouries, oatcakes & biscuits are freshly made every day using traditional methods.

Shop open: Mon 9.30am-1pm, Tues-Fri 9.30am-5.30pm & Sat 9.30am-1pm. Tel: 01870 602659. Email: enquiries@macleansbakery.co.uk



MUSEUM NAN EILEAN (LIONACLEIT):

Discover the history and culture of the Outer Hebrides. Always something new to see! Enjoy engaging temporary displays including island heritage and national touring exhibitions. Located within the Sgoil Lionacleit Community School.

Museum Open: Tuesday, Thursday & Friday 10am - 1pm, 2pm - 5pm Wednesday 10am - 1pm Saturday 10am - 3.30pm

Closed: Sunday & Monday
Email: museumU&B@cne-siar.gov.uk



TRINITY TEMPLE is a historic ruin listed as of European significance and possibly Scotland's oldest University. The building is the remains of a medieval monastery and college founded by Beathag, daughter of Somerled. The building has been extended up to the 16th century but destroyed after the Reformation. Again restored in the 16th Century by Dotair Ban and recently renovated in 2011.



F

NORTH UIST, popular with fishermen, walkers, birdwatchers, cyclists and motorhome owners has a varied landscape of saltwater lochs, cultivated crofts and magnificent beaches surrounded by machair. **Traigh Lingeigh** has a huge expanse of pure white sand, crystal waters and a shallow bay suitable for swimming and snorkeling. The ferry from Uig on Skye docks in **LOCHMADDY**. Na Madaidhean are rocks in the bay after which the loch and the village are named. The Loch is an area of conservation giving recognition to marine landscapes and diverse wildlife. **Taigh Chearsabhaigh museum and heritage centre** is located in the village.



G

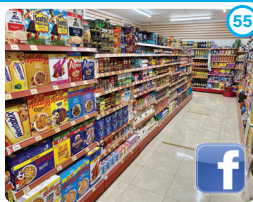
THE ISLE OF BERNERAY is where you arrive by ferry from the Isle of Harris. Berneray Shop and Bistro, Berneray Historical Society and a post office are located in the village alongside a picturesque fishing harbour. West Beach has a 3 mile stretch of sand made up of broken shells and fringed with machair. Much of the landscape is agricultural with cornfields on the western side of the island; home to corncrake and other nesting birds in the spring and summer. To the north is a scenic walk with views towards the Harris Hills. Berneray is linked to North Uist by a causeway.



H

BAYHEAD SHOP & 24-HOUR FUEL:

Licensed convenience store with Post Office and petrol station. Our wide range of fresh foods and groceries features local products. Newspapers & fresh baking available daily.
Shop Open Monday - Saturday, 8.00am - 6.00pm.
You can find us on Facebook for any updates.
Tel: 01876 510257
On B865 at Bayhead, HS6 5DS



55

R.S.P.B. NATURE RESERVE at Balranald. Balranald is famous for its corncrakes, now one of Europe's most endangered species. The circular nature trail through the croft land of the reserves is 3 miles (4.5 km) and takes 2-3 hours. The trail goes through wildflower-rich machair and round a bird-rich headland. A wide selection of wildlife can be seen, from wading birds to the elusive otter.



56



57

Visit the **HEBRIDEAN JEWELLERY** shop and workshop at lochdar, selling a wide variety of jewellery, giftware and books of quality and good value for money. This quality hand-crafted jewellery is manufactured on South Uist in the Outer Hebrides.

The shop in South Uist has a coffee shop close by the beach, where light snacks are served. If you are unable to visit our shop, please visit us on our online store.

www.hebrideanjewellery.co.uk

Tel: 01870 610288. HS8 5QX.



UIST GIFTS AND INFORMATION: Based on Pier Road in Lochboisdale, Uist Gifts and Info is a friendly Information centre for visitors to the islands. Selling Harris Tweed, local arts, crafts, gifts, books and clothing from the Outer Hebrides. Providing shipping agent facilities and land services for visiting boats. Local tours, information on walks, cycling routes, archaeology and wildlife spotting in the local area.
Tel: 01878 700777. Email: uistgifts@gmail.com
Pier Road, Lochboisdale, South Uist, HS8 5TH.



58

KILBRIDE HOSTEL, CAFE AND CAMPSITE:

An ideal stopping off point for anyone walking, cycling or visiting South Uist. En-suite bedrooms, meals and camping facilities.
Sited by the white sand beach and Kilbride Cafe.

Tel: 01878 700568 Mobile: 07751 251522

Email: kilbridesouthuist@gmail.com

www.kilbridecampsite.co.uk



59

THE KILDONAN MUSEUM lies on the main north, south road in South Uist. A museum, with arts and a cafe. Car parking and facilities available. A good place to visit for information about South Uist, its culture, environment and history.

Open: April - October, 7 days a week, 10am - 5pm.

Tel: 01878 710343

kildonanmuseum.co.uk

HS8 5RZ



60

Isle of Barra - see map on Page 8



BÙTH BHARRAIGH (Castlebay)

Community run visitor information and shop providing local food and crafts.

Laundry, Free WiFi

Open seven days a week

Phone: 01871 817948

Email: visit.info@buthbharraigh.co.uk

www.buthbharraigh.co.uk



61

BARRA HERITAGE CENTRE located close to the centre of Castlebay, **Dualchas** is placed in a prime location looking out over the bay to the southern islands. It is a treasure trove of historical documents, artefacts and photographs relating the story of the Herring fishing industry, the Clearances and the emigration which ensued after The Clearances. The centre is a visible commitment made by the community towards preserving Barra heritage and sharing their stories with people worldwide.



62

CASTLEBAY SPORTS CENTRE is situated next to Castlebay School and includes a swimming pool (20 metres by 9 metres) with Sauna, which can be used in term time after 4pm and in the holidays from 2pm. Also available is a fitness suite area with Technogym equipment. For general enquiries or to book a gym induction please contact 01871 810129. For games hall bookings please contact Castlebay School on 01871 810100.

www.cne-siar.gov.uk/csc/index.asp For the latest information check our Facebook page: 'Castlebay Sports Centre.'



63

THE HEBRIDEAN WAY is a classic 185 mile cycle route, starting at Vatersay to the south of Barra, and finishing at the Butt of Lewis, crossing 10 islands, linked by ferries and causeways. Following the official National Cycle route 780, it provides spectacular scenery and awesome coastlines. Along the west side of Benbecula, the cafes, restaurant and supermarket make it an ideal staging point. See maps on page 5 & 8.



64

Map of Uist, Benbecula and Barra

BENBECULA in Gaelic is Beinn na Faoghla meaning 'Mountain of the Ford', an apt name for the island and it's solitary hill Rueval, (Ruabhal) also known as the Hill of Miracles — a stepping stone between North and South Uist. Connecting the islands is a series of once treacherous causeways, that meant crossing to the Uists would have involved fording the dangerous stretches of tidal sands. **BALIVANICH** accessed by a coastal road detour, is situated to the northwest of the island where you will find an airport, hospital, fuel station, swimming pool, museum, supermarket, Maclean's Bakery & Butchers, Stepping Stones Restaurant and a riding school.



BENBECULA AIRPORT has a long military history: an airfield was built here during WWII, which then became the control centre for the Hebrides rocket range during the Cold War. An Army base established in 1958 is the headquarters for those who service the South Uist missile range, which lies on the northwest part of South Uist together with its local radar tracking station. **RAF Benbecula** serves as the range headquarters and provides additional support facilities; the final part of the range is the radar tracking station on **St Kilda**. The Hebridean range is described as the largest air and sea range in Europe.



SOUTH UIST is a beautiful island with clear waters and white sandy beaches to the west and heather uplands to the east. The 20 miles of Machair that runs alongside the sand dunes provides a habitat for the rare corncrake. Golden eagles, red grouse and deer can be seen on the mountain slopes to the east. To the east of the A865 near to Stilligary lies **Loch Druidibeg**, one of the best places in the Hebrides to see the full range of island wildlife and habitats. South Uist is an archaeologists paradise, a historians dream and the birthplace of Flora Macdonald, who gained immortality for assisting Bonnie Prince Charlie after he fled the mainland following his defeat at Culloden in 1746. Walking is part of the South Uist experience; **Ben Mhor**, **Ben Corodale** and **Hecia** are the highest peaks for the experienced hillwalker. There is a horseshoe walk to the hills from **Howmore Hostel** where you will see spectacular landscapes. **Lochboisdale**, once a major herring port, is the main settlement and ferry terminal. The marina is located at the end of the breakwater with facilities for visiting yachts. The Gaelic language, crofting industries, peat cutting and seaweed gathering are still an important part of everyday life. **Askernish Golf Course** is the oldest golf course in the Western Isles and is a unique test for any golfer.



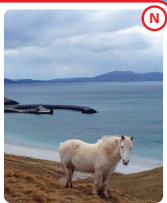
WALKING ON BARRA AND VATERSAY If you ascend Heaval which is the highest hill you can see the surrounding Islands and on a clear day you can see the Isles to the south and as far as the Isle of Mull. **The Vatersay walk** is a circular walk of about 4 miles and takes approximately 3 hours. The walk begins in the small car park across the road from the Annie Jane monument. It takes in the sight of Bagh Siar (West Bay), Bagh a Deas (South Bay), Eroisdale and Vatersay Bay. Throughout the spring and summer the Machair is in full bloom and runs along the entire west coast of Barra and Vatersay.



Eriskay, Barra & Vatersay

GRIMSAY, GRIOMASAIGH is a tidal island connected to North Uist and Benbecula that measures four miles long and two miles wide. A beautiful landscape, history, archaeology, seafaring, crafts, fresh seafood and a warm welcome awaits you.

In the far south is the **ISLE OF ERISKAY** with its famous ponies. The ponies are semi wild and often seen in the vicinity of the village. Eriskay is also home to famous wreck the S.S. Politician. The wreck was the inspiration for the Compton Mackenzie book and film, Whisky Galore. The SS Politician was an 8000-tonne cargo ship which left Liverpool on the 3rd February 1941 laden with amongst other things 260,000 bottles of whisky, bound for Kingston in Jamaica and New Orleans. She went aground off the coast of Eriskay.



Uist & Benbecula



CAFE KISIMUL: (Castlebay) A family run licensed restaurant specialising in Indian & fresh local seafood.
Open: Mon - Sat for lunch and dinner. Booking essential (evenings).
Tel: 01871 810645. www.cafekisimul.co.uk



KISIMUL CASTLE sits on a rocky island just off Castlebay and was built around 1039. Since that time, Kisimul has been the stronghold of Clan MacNeil. It is completely surrounded by water and has never fallen to an enemy. Kisimul was abandoned in 1838 when the island was sold, and the castle's condition deteriorated. The castle remains, were purchased by the chief of Clan MacNeil in 1937, who in 2001 leased Kisimul Castle to Historic Scotland for 1000 years for the annual sum of £1 and a bottle of whisky. The boat trip from Castlebay jetty to the castle takes 5 minutes.

